



## FCA1804 RS232 TO USB Adapter Product Manual

### Overview

---

- Adapter for standard RS232 to USB
- USB 2.0 specification compliance
- Supports automatic handshake mode
- USB bus-powered and no external power required

### Technical Data

---

Compatibility	USB 2.0 and EIA/TIA RS-232C standards
Power Source	Powered from USB port
Baud Rates	115200 bps
Interface (PC side)	USB: Type A port
Interface (Panel side)	RS-232: DB-9 Female
Length of DB9 cable	1m±1cm
Length of USB cable	1m±1cm
Operating temperature	0~ +40°C
Storage temperature	-20 ~ +60°C
Humidity	≤95% (40±2°C)
Size	102*72*25 mm

## Connection diagram

Connect RS232 cable and USB cable with Adapter:

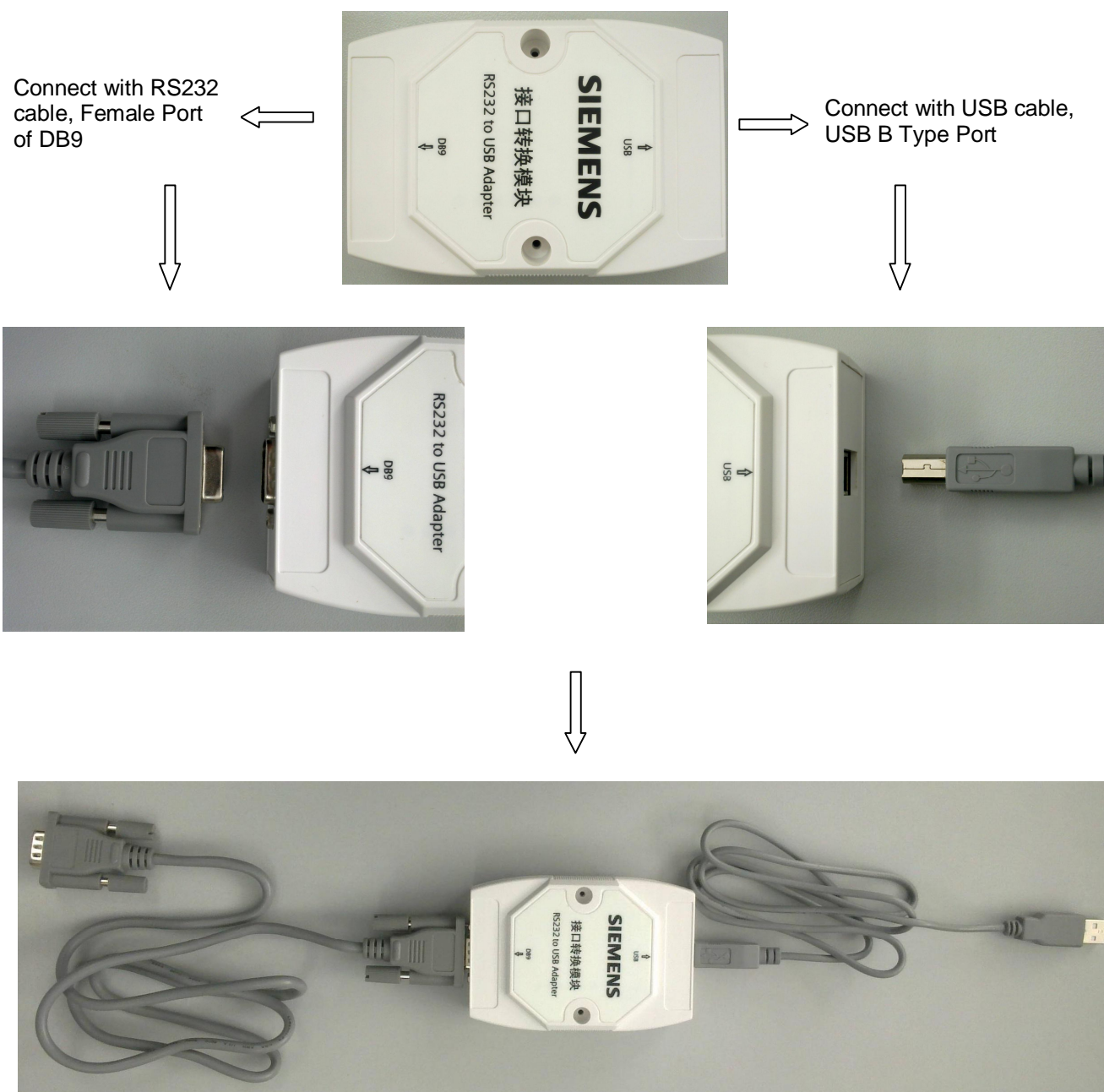


Fig. 1 Connect Cable with Adapter

**Connect to panel and PC:**

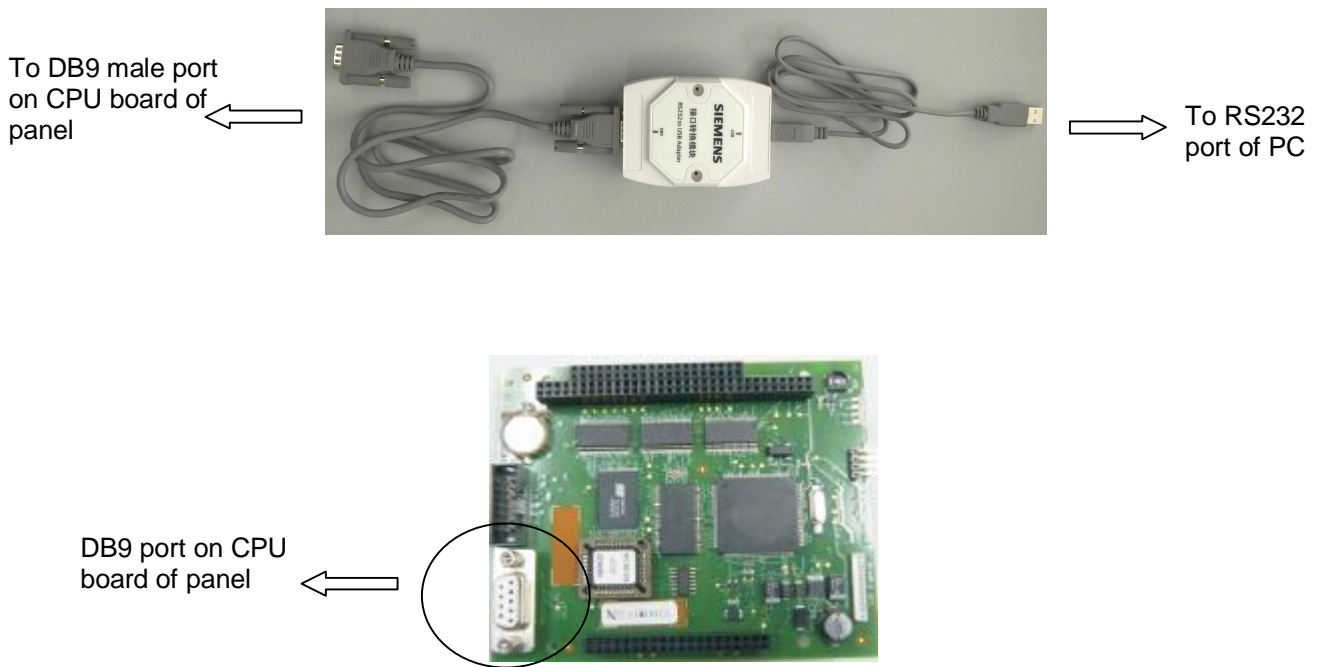


Fig. 2 Connect to panel and PC

**Note: RS232 to USB Adapter is used to download/upload field system file configuration. For secure connection, Adapter must connect to panel before it connects to PC.**

**Order Information**

Type	Material No.	Part No.	Description	Weight
FCA1804	S54420-F8-A1	100758038	FCA1804 USB/RS232 Adapter	78g

Beijing Siemens Cerberus Electronics Limited  
No.1,Fengzhdonglu, Xibeiwang, HaiDian District,  
Beijing, 100094, China  
Tel: +10 6476 8806  
Fax: +10 6476 8899

© 2011 Copyright by  
Beijing Siemens Cerberus Electronics Ltd.  
Data and design subject to change without notice.

---

Doc. No. A6V10334656\_a\_en\_--  
Date 07.2011

Version a  
101140410

Manual FC18